

Multi Use Games Area (MUGA Use – Covid-19 Wider Opening) – Risk Assessment

School Name		Decide who may be harmed (insert ✓):				
The Boulevard Academy		Student	✓	Contractors		Visitors
Location		Staff	✓	Vulnerable People	✓	Volunteers
Identified Hazards	Initial Risk Rating	Existing Control Measures (select all that are in place)	✓	Actions / Comments	Residual Risk Rating H/M/L	
Risk of infection (Covid-19) spreading amongst students and staff	H	MUGA is marked up for students to allow them to remain 2 meters from other students when out on breaks/lunch.	✓	<i>Equipment cleaned as required on MUGA</i>	M	
		Class bubbles for Yr7, 8, 9 & 10 have a break time at staggered intervals throughout the course of the day and are supervised by staff.				
		Students and staff will use hand sanitiser when returning into the building	✓			
Safeguarding	H	An adequate number of staff are on duty when pupils are using the MUGA	✓	<i>Staff to pupil ratios take account of age/ability and activity</i>	L	
		Suitable and secure perimeter fences and gates are in place, students are not allowed outside until duty staff arrive to supervise	✓			<i>Refer to whole school security risk assessment.</i> <i>Regular documented checks of perimeter are conducted for security.</i>
Slips, trips, falls	H	Playing surfaces are appropriate for the activities undertaken, are routinely inspected and maintained in a good condition (checks are documented).	✓	<i>Refer to School Premises Manual for further information on checks to be undertaken.</i>	L	
		During inclement weather staff check the surface before each use to ensure it is not too wet, slippery, icy etc to undertake the planned activity safely. If the surface is icy the MUGA will be locked off.	✓			
		Where staff have concerns about the condition of the MUGA playing surface it is not used and an alternative activity undertaken	✓			
		H	Suitable clothing and footwear is worn for the activity, environment and weather conditions.	✓	<i>Refer to Staff Code of Conduct & Pupil Uniform Policy</i>	L
			A known procedure is in place for reporting hazards or defects	✓	<i>Defects are reported to site staff, and remedial works carried out as necessary.</i>	

		Staff and pupils are regularly reminded not to leave equipment, resources or other items around the MUGA that may cause a hazard	✓		
		Holes in the surface for fixing nets/poles etc are plugged when not in use. Plugs and holes are routinely inspected by site staff (checks are documented)	✓	<i>Tennis post slots only</i>	
Cuts/bruises/trapped fingers/sprains/other injuries		Pupils and staff are instructed in the correct techniques for the activity and appropriate use of any equipment or apparatus provided	✓	Goal/Netball etc Posts are to Appropriate British Standard	
Cuts/bruises/trapped fingers/sprains/other injuries (cont)		Fences, gates, benches, posts and other fixtures are subject to routine visual inspections, ensuring they remain safe to use (checks are documented)	✓	Refer to SG26 and Appropriate Risk Assessments	
		Gates, fences and other equipment are all routinely inspected to ensure they do not present a risk of fingers being trapped.	✓		L
	M	Posts, goals, nets etc are visually checked by staff before each use to ensure they are secure, stable and fit for use	✓		
		Appropriate warm up and cool down exercises are incorporated in to the activity	✓		
Fall from Height/Falling Objects/Equipment		Staff are regularly reminded to minimise working at height, only those appropriately trained are permitted to use stepladders/ ladders/mobile towers	✓	Refer to SG26 Goal Posts if Appropriate	
	M	Equipment is checked before use to ensure it is stable and free from obvious defects	✓		L
Manual Handling		Staff are regularly reminded not to move heavy objects/equipment unless they have received the appropriate training.	✓	Refer to Task Manual Handling Risk Assessment if Appropriate	L
	H	Pupils are only permitted to move equipment or apparatus after the hazards of doing so have been fully explained, they have been shown the correct techniques, and only under close staff supervision	✓		
Inadequate First Aid		Adequate number of trained first aiders are available, suitable first aid facilities are provided and there is a known procedure in place for reporting of accidents/incidents or near miss occurrences	✓	Also Refer to Whole School First Aid Risk Assessment (Covid-19) if Appropriate	
	H	Pupils with known medical conditions (eg respiratory problems, history of fractures etc) only participate following discussion with parents/carers	✓		L
Infections		MUGA is subject to a daily inspection, any litter, glass, needles, animal faeces or other items that may cause harm are removed before use (Checks documented)	✓	Refer to Litter Picking and Syringes Risk Assessments	L

Horseplay/Inappropriate Behaviour	M	Appropriate supervision ratio is in place taking account of the activity, age and abilities of pupils. Pupils are regularly reminded about appropriate behaviour. A known behaviour policy is in place and sanctions are enforced where appropriate	✓	<i>Refer to the School Behaviour Policy if Appropriate</i>	L
		Pupils with significant behavioural issues have an Individual Behaviour Management Plan in place	✓		
Fire/Other Emergency Evacuation Situations	H	Fire escape routes are kept free of obstructions, and provide a clear and easy means of escape, locked gates are controlled by mag locks which release on fire alarm activation	✓	<i>Refer to School Fire Emergency Action Plan</i> <i>New measure in place for muster point allowing for social distancing</i> <i>Secondary location would be the far end of the playing field due to the temporary unavailability of Chiltern Primary</i>	L
		Where the MUGA is used as a muster point clear signage is in place to indicate this and the relevant fire collation areas. See below plan	✓		
		There is a secondary set of gates to aid with evacuation from site should the muster point become unfavourable.	✓		
		There is a known system in place to communicate with staff who are using the MUGA in the event of an emergency	✓		
		Staff supervising activities in the MUGA have a means of communicating with the main school in case of an emergency/incident/intruder to raise the alarm.	✓		

Risk Rating Guidance: H= High M= Medium L= Low TBA = To Be Assessed - Assessment of the likelihood and or impact of injury and or damage. Initial assessment has been undertaken, complete the residual assessment based on your control measures/findings/additional actions etc.

Likelihood of Occurrence	Potential Severity of Impact		
	Negligible	Significant	Major
Certain	Medium	High	High
Likely	Low	Medium	High
Unlikely	Low	Low	Medium

Other Hazards Identified Additional Control Measures to be Put in Place

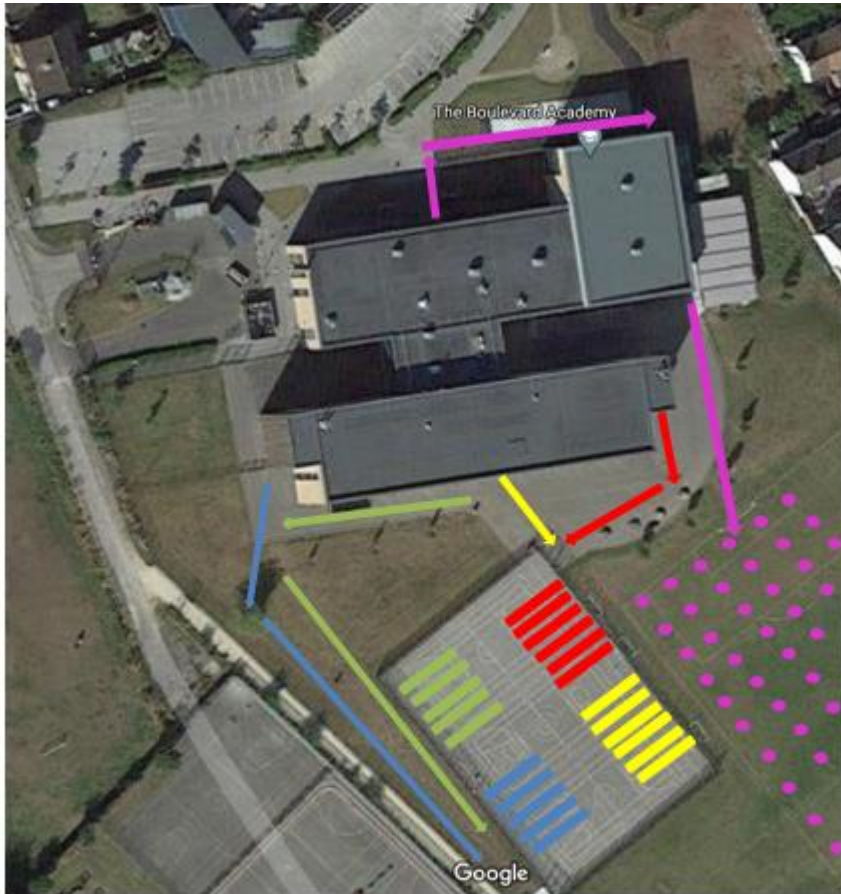
Any other foreseeable hazards that are associated with the activities being carried out to be listed here.

Where you have identified other hazards record the additional control measures you are going to put in place to mitigate these below:

- **LESSON PLANNING DOCUMENTATION &/OR SCHEMES OF WORK &/OR ACTIVITY/TASK SPECIFIC RISK ASSESSMENTS SHOULD DETAIL THE HAZARDS AND CONTROLS IN PLACE IN RESPECT OF SPECIFIC CURRICULUM BASED ACTIVITIES & APPROPRIATE SUPERVISION LEVELS**

Date of Assessment:	30.08.20	Carried out by:	R.Howgill	Signature:	
Date of next review:	22.10.20	Carried out by:	R.Howgill	Date Review Completed:	28.10.20
Date of review:	15.12.20	Carried out by:	JMI/CDA	Date Review Completed:	14.12.20
Date of review:	11.02.21	Carried out by:	RHO	Date Review Completed:	15.03.21
Date of next review:	12.04.21	Carried out by:	RHO	Date Review Completed:	12.04.21 No Changes
Date of next review:	17.05.21	Carried out by:		Date Review Completed:	

Note: Health and safety in our school is the responsibility of everyone and is about taking a sensible and proportionate approach to ensure that the learning environment provides a healthy and safe place for all who use it, including staff, volunteers, visitors and Pupils.



*Note plan is not to scale but represents the 2m social distancing for Yr11 Students on the football pitch.

**Between Year groups on the MUGA there is a distance of 5m]

Key: Yr7- ■ Yr8 - ■ Yr9 - ■ Yr10 - ■ Yr11 - ■