

# Health and Social Care

**14% of employment in the Humber is in Health & Social Care.**

Health care is about the treatment and support of medical conditions in hospital, health centres and in the community. It includes Dentists and Opticians. Social care is about the care and support of people within the community.

### Will there be opportunities available?

- The number of Health & Social Care jobs is predicated to grow to around 2.6million by 2025 nationally.
- The NHS remains the biggest employer in the UK and the 5th largest employer in the world employing over 1.7 million people.
- An additional 174,000 social care workers will be need across Yorkshire & Humber by 2035 to meet predicated demands.
- Hull York Medical School will train an extra 90 doctors per year from 2019 to meet the demands of the NHS.

### Did You Know?

- Nearly all Health & Social Care organisations offer apprenticeships.
- Around 20% of the workforce in the Humber is aged 55 or over.

- 16% of Adult Health & Social Care workers in the Humber are male and 84% female, more males are needed in the sector.
- Due to an aging population Health & Social Care is one of the fastest growing sectors in the UK with 7,200 vacancies at any given time across Yorkshire & Humber.
- 25% of adult social care workers are employed on zero hour contracts.
- Over 1335,000 people are employed in the sector in the Humber.



Types of Job	National Average Salary
Social Worker	£24,000 to £40,500
Care Home Assistant	£12,500 to £25,000
Residential Home Manager	£20,000 to £54,000
Pharmacist	£30,500 to £45,000
Midwife	£24,214 to £43,772
Dental Nurse	£18,813 to £30,112
Doctor (GP)	£37,191 to £87,003
Medical Secretary	£16,500 to £27,000
Occupational Therapist	£24,214 to £43,772
Physiotherapist	£24,214 to £43,772
Podiatrist	£24,214 to £37,267

### Skills/qualities

- Communication
- Sense of responsibility
- Good timekeeping and organisational skills
- Team work
- Empathy and compassion

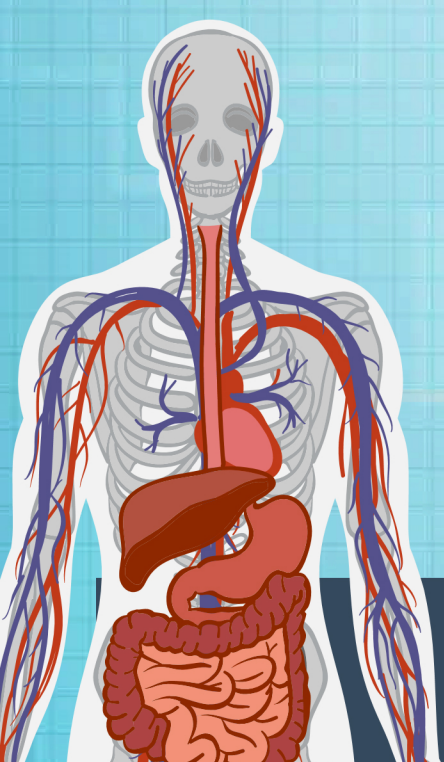
### Useful subjects include

- English
- Maths
- IT
- Science

### Some local employers

- NHS
- HICA Group
- Relate
- Busy Bees Childcare
- Dove House Hospice
- Spire Healthcare
- Sue Ryder Care
- City Health Care Partnership

Sources: Business Register Employment Survey, Annual Survey of Hours and Earnings, Office for National Statistics, Skills for Care.



**For information...** <https://nationalcareers.service.gov.uk/> [www.skillseastriding.co.uk](http://www.skillseastriding.co.uk) [www.logonmoveon.co.uk](http://www.logonmoveon.co.uk) [www.lincs2.co.uk](http://www.lincs2.co.uk)  
[www.lincs4u.co.uk](http://www.lincs4u.co.uk) [www.apprenticeships.org.uk](http://www.apprenticeships.org.uk) [www.allaboutcareers.com](http://www.allaboutcareers.com) [www.stepintohenhs.nhs.uk](http://www.stepintohenhs.nhs.uk) [www.caringcareers.gov.uk](http://www.caringcareers.gov.uk)  
[www.skillsforcare.org.uk](http://www.skillsforcare.org.uk) <https://humbercoastandvale.org.uk/how/workforce/humber-coast-vale-excellence-centre/>